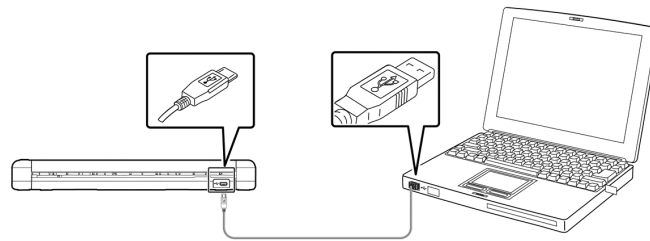




1 What's in the box/Deutsch Lieferumfang



2 Connect to Power/ Mit der Stromversorgung Verbinden



3 Install the Scanner Driver (Windows) Installieren Sie zuerst den Scannertreiber (Windows)



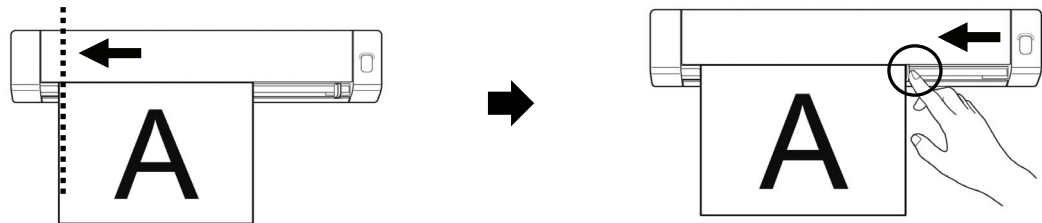
Download the scanner driver from the Avision web site at <https://www.avision.com/eu/download/>.
Laden Sie den Scannertreiber von der Avision-Website unter <https://www.avision.com/eu/download/> herunter.

3 Install the Scanner Driver (Mac) Installieren Sie zuerst den Scannertreiber (Mac)



Download the scanner driver from the Avision web site at <https://www.avision.com/eu/download/>.
Laden Sie den Scannertreiber von der Avision-Website unter <http://www.avision.com> herunter.

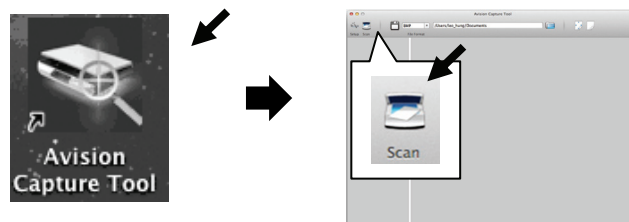
4 Load a Document/ Ihre Dokumente einlegen



5 Open Avision Capture Tool to Start a Scan (Windows) Öffnen Sie das Avision Capture Tool, um einen Scan zu starten (Windows)



5 Open Avision Capture Tool to Start a Scan (Mac) Öffnen Sie das Avision Capture Tool, um einen Scan zu starten (Mac)



! For more information, view user's manual/ Weitere Informationen finden Sie im Benutzerhandbuch

 Download



Download manual from the Avision web site at <https://www.avision.com/eu/download/>.

Laden Sie das Handbuch von der Avision-Website unter <https://www.avision.com/eu/download/> herunter.



European Union Regulatory Notice

Products bearing the CE marking comply with the following EU Directives:

- Low Voltage Directive 2014/35/EC
- EMC Directive 2014/30/EC
- Restriction of the use of certain hazardous substances (RoHS) Directive 2011/65/EU